

# Bluewhale for Outlook 2.1.x

## User guide

Last updated 2020-02-20

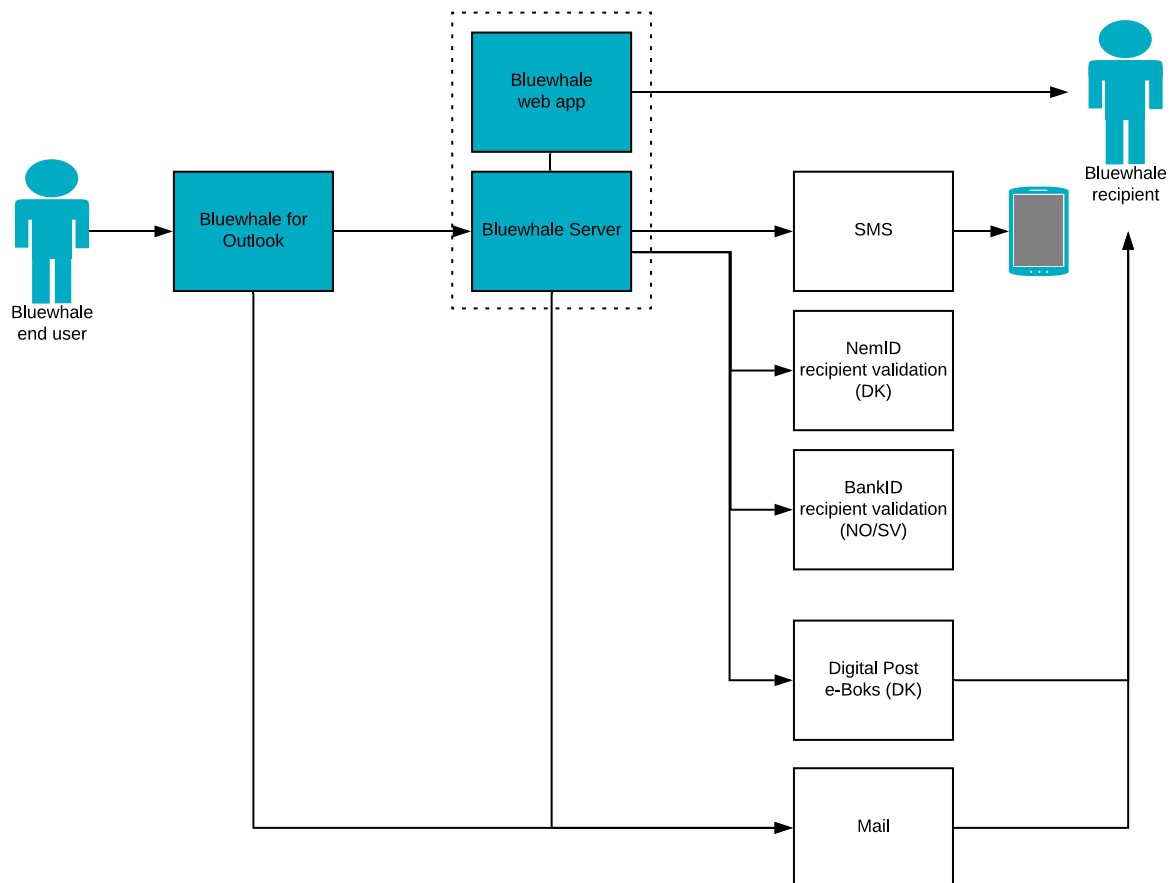
Introduction to Bluewhale for Outlook.....	2
Download and installation .....	3
Settings.....	6
Upgrading from Bluewhale for Outlook 1.x.....	6
Usage.....	7
Open replies and forwards in a new window .....	8
Downloading secure replies.....	8
Deployment .....	9
Example install script .....	9
Multi-user environments .....	9
Basic Properties .....	9
Authentication .....	10
Sending methods .....	10
Additional features .....	11

## Introduction to Bluewhale for Outlook

Bluewhale makes it easy to exchange confidential messages and large files using e-mail with two factor authentication and file encryption.

With the Bluewhale for Outlook add-in most of Bluewhale's functionality is available directly from Outlook 2010/2013/2016.

Bluewhale for Outlook is shipped as an MSI package and requires .Net 4.5 which is preinstalled with Windows 8 and newer.



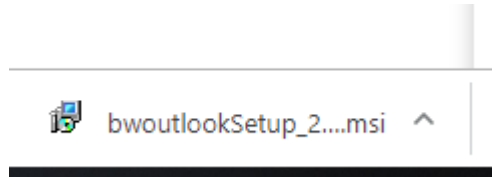
## Download and installation

Visit the following address in your browser: <https://bluewhale.dk/en/support-faq/download/> and click "Download Bluewhale for Outlook 2.0.x here" to start the download.

## Download add-in for Outlook 2010/2013/2016

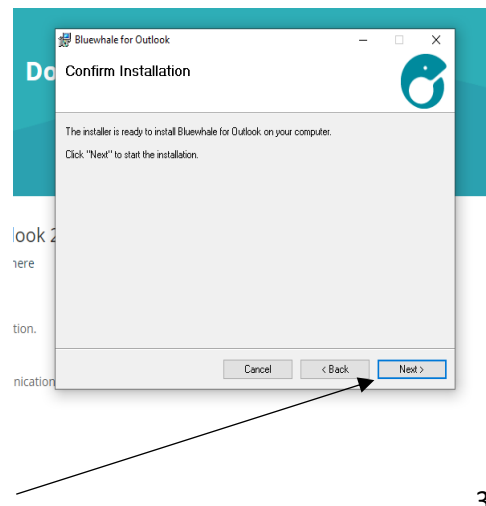
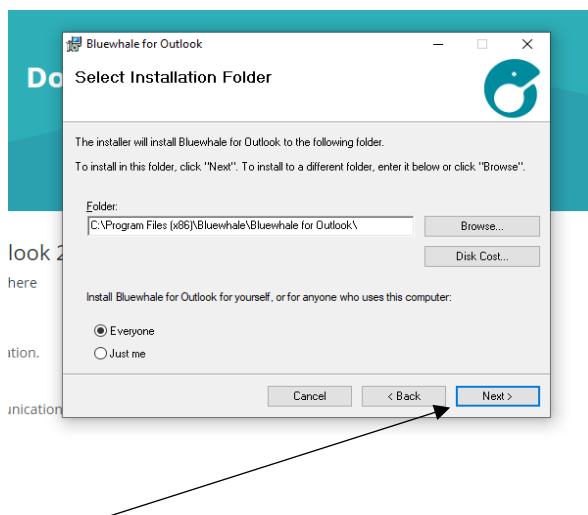
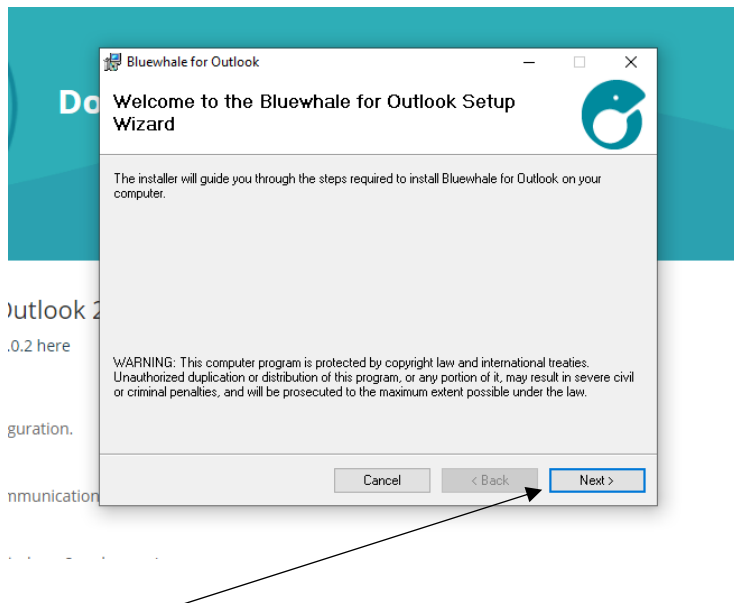
[Download Bluewhale for Outlook 2.0.2 here](#)

When the download is complete, you should see the installation file in the bottom left corner of the browser window.

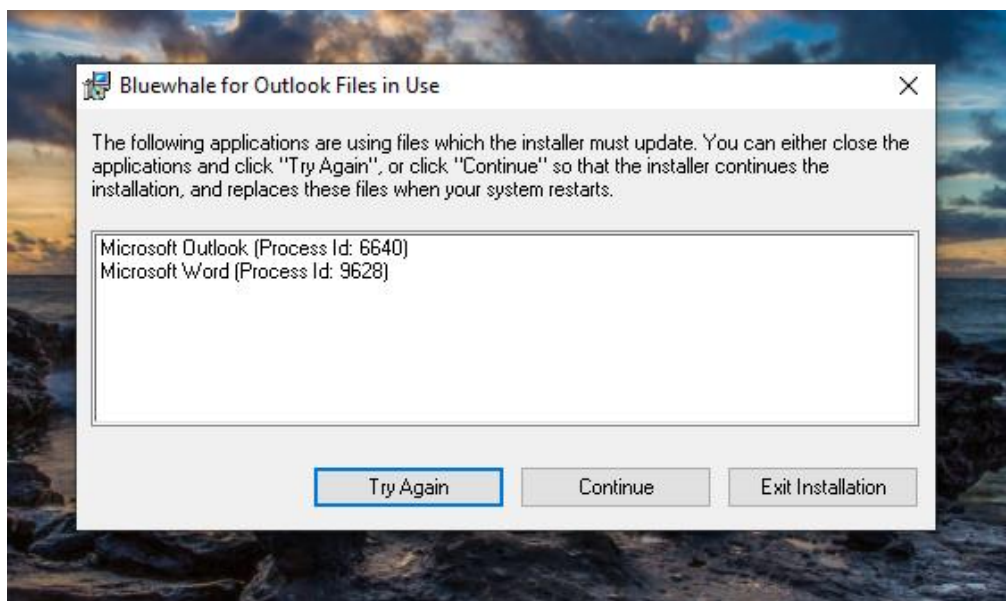
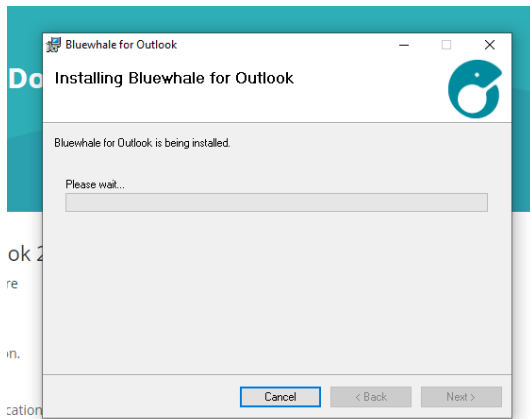


Your previous version of Bluewhale for Outlook will be replaced once installation of the latest version is complete, so it is not necessary to uninstall as this is done automatically.

**If Outlook is running, please close it and then click on the installation file to start the installation.**

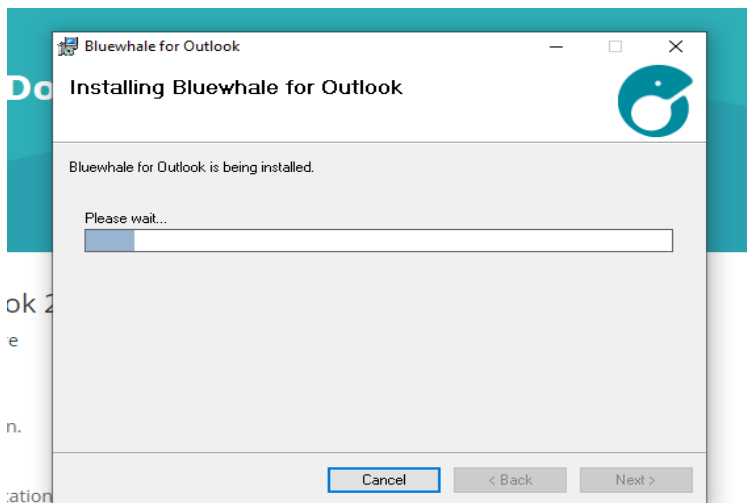


If Outlook is still running you will see the message below:

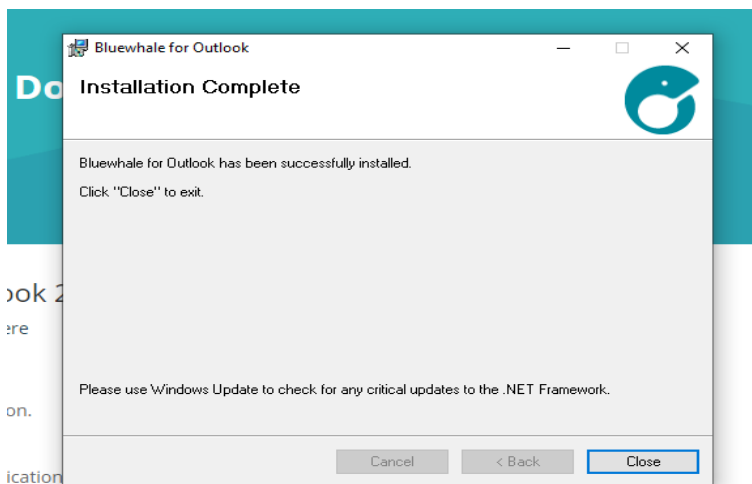


You can either close Outlook and click "Try Again" or click "Continue" and restart later.

Installation begins...

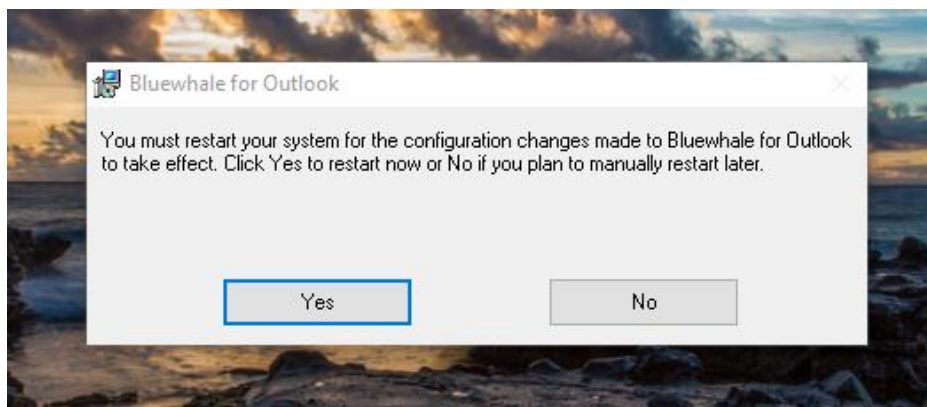


Installation is done. Click "close" to Complete.



If you did not close Outlook before installing, you need to restart to finish the installation.

Otherwise you can just start Outlook again.



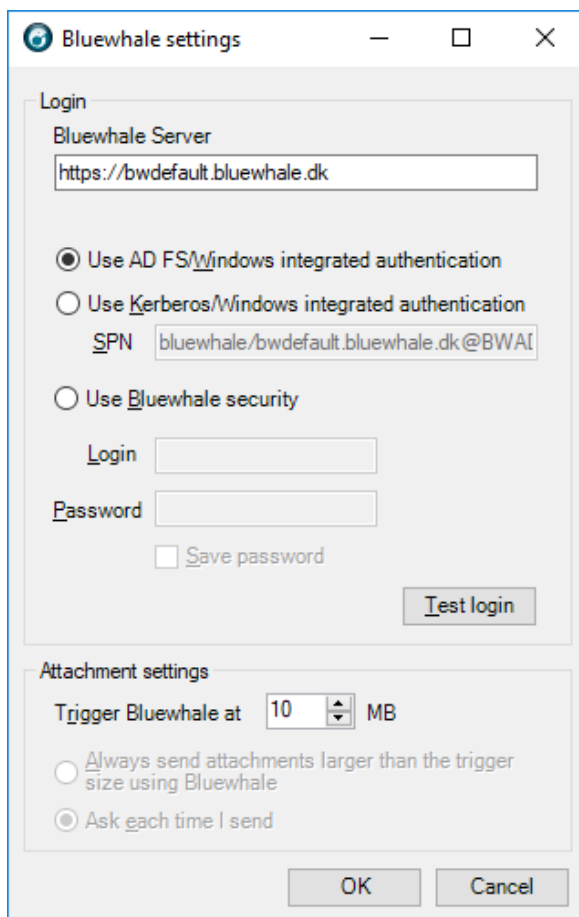
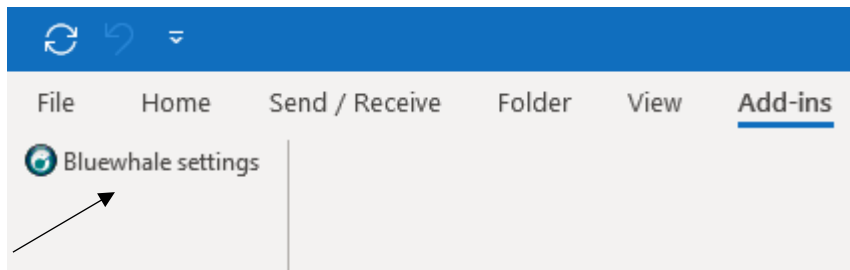
## Settings

Before using Bluewhale you must enter the address of your Bluewhale-server and select authentication method.

If you're Bluewhale Cloud customer use following Bluewhale Server: <https://cloud.bluewhale.dk>

Wolters Kluwer customers should use: <https://wolterskluwer.bluewhale.dk>

If you're a Bluewhale Enterprise customer please consult your IT-department.

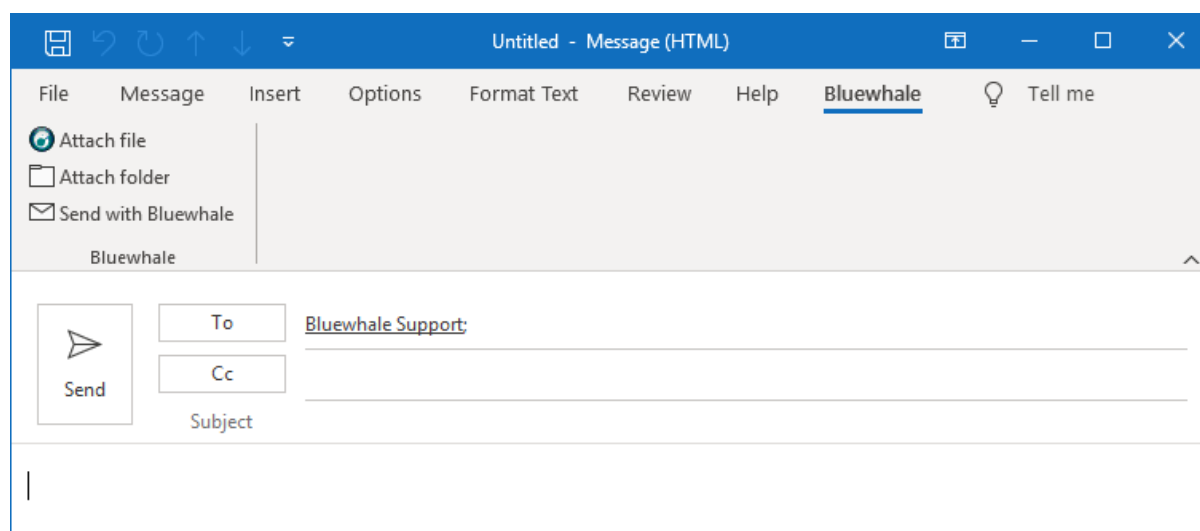


## Upgrading from Bluewhale for Outlook 1.x

Personal settings from Bluewhale for Outlook 1.x are automatically detected and applied.

## Usage

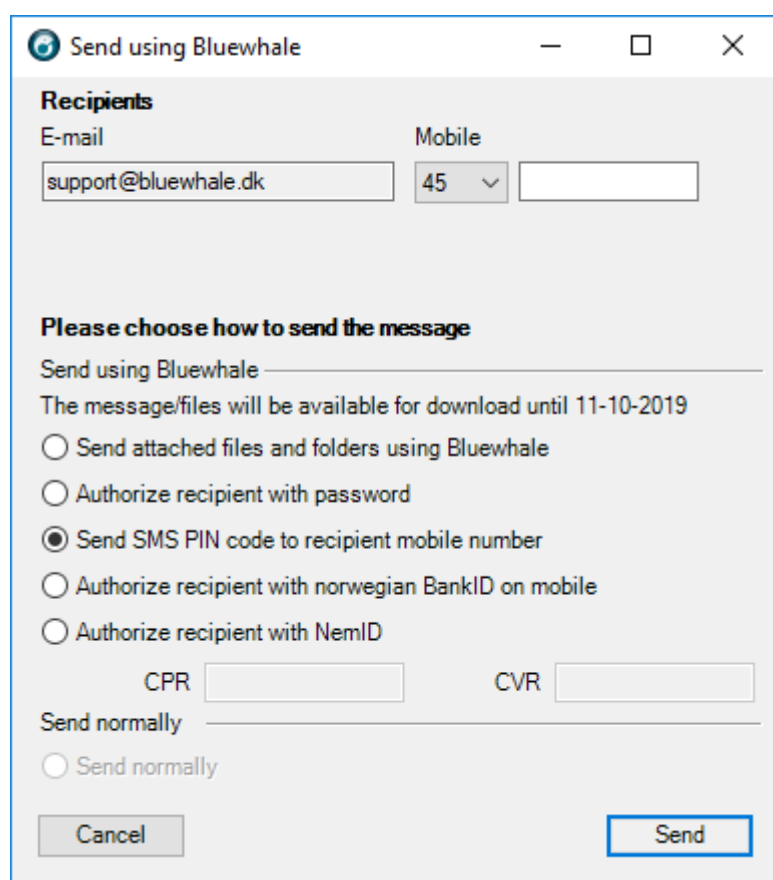
When Bluewhale for Outlook is installed, an extra “Bluewhale” tab is added to mail windows.



“Attach file” can be used to attach files, bypassing Outlook’s normal limitations on file sizes and types.

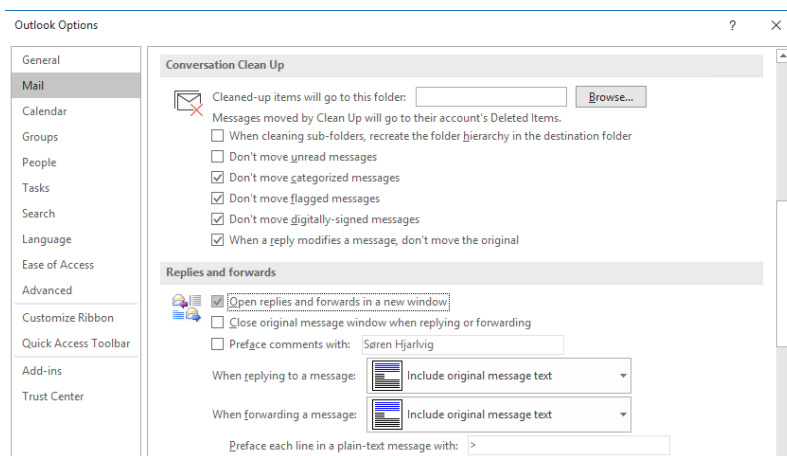
“Attach folder” can be used to attach a complete folder.

Bluewhale is activated by clicking the “Send with Bluewhale”-button.



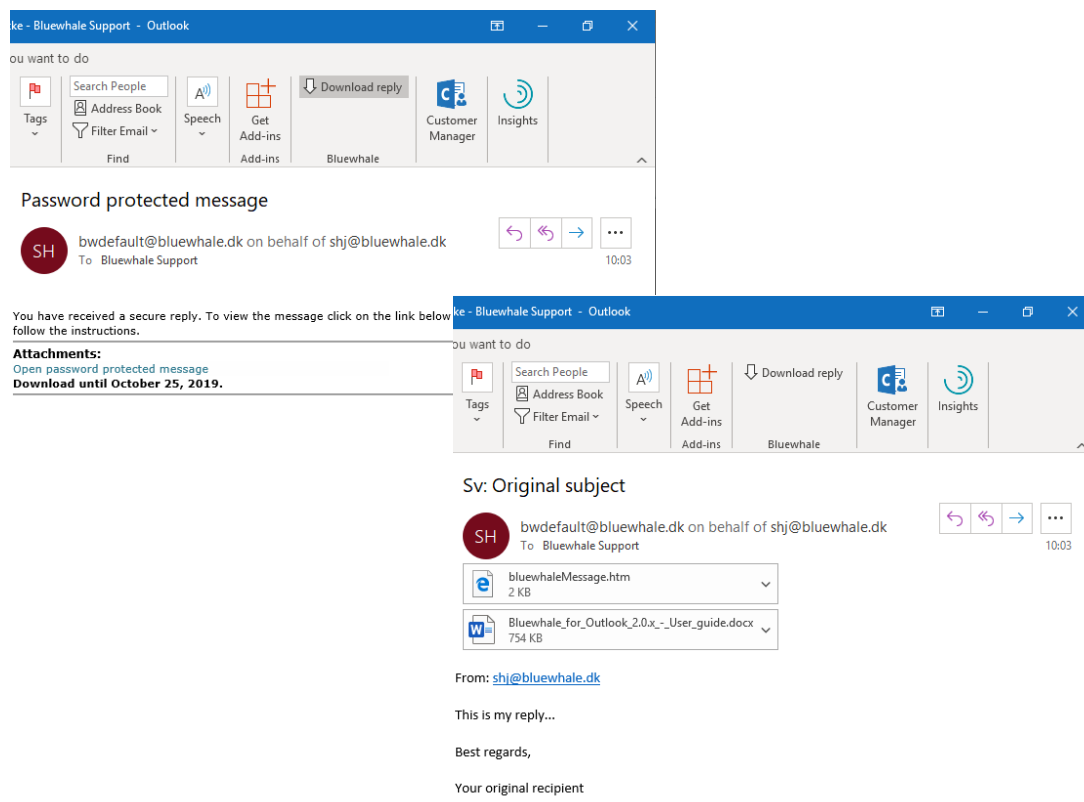
## Open replies and forwards in a new window

To enable Bluewhale functionality when replying or forwarding mail, you must check the “Open replies and forwards in a new window” option in Outlook mail settings.



## Downloading secure replies

When you receive a secure reply (e.g. a recipient has replied to a message sent with Bluewhale), it is possible to import the message in Outlook. This enables you to handle the secure reply like any other mail in Outlook.





## Deployment

The Bluewhale for Outlook MSI supports various properties.

When Bluewhale for Outlook is installed the settings provided to the installer are stored in the registry:

HKEY\_LOCAL\_MACHINE\SOFTWARE\WOW6432Node\Bluewhale\Bluewhale for Outlook

This will be the default settings for all users on the machine. Personal settings are stored here:

HKEY\_CURRENT\_USER\Software\Bluewhale\Bluewhale for Outlook

When installing on many computers, it is recommended to create an install script or transformation file with the desired settings. It is also possible to push the settings using a group policy.

### Example install script

Example using Bluewhale for Outlook install cmd/bat script for Kerberos user validation:

```
msiexec.exe /i bwoutlookSetup.msi /qn
  BLUEWHALE_SERVER="https://bluewhale.your.domain"
  SERVICE_PRINCIPAL="bwservice/bluewhale.your.domain@COMPANY.DOMAIN"
  USE_SSPI="True"
  ASK_BEFORE_BLUEWHALING="True"
  LOWER_LIMIT="20"
  /I* bwinstall.log
```

### Multi-user environments

By default Bluewhale for Outlook is available for all users on the system.

If you wish to limit the add-in to specific users, you can delete the HKLM registry key:

HKEY\_LOCAL\_MACHINE\SOFTWARE\Microsoft\Office\Outlook\Addins\bwoutlook.AddinModule

And only re-add the key to HKEY\_CURRENT\_USER where needed using a group policy:

```
[HKEY_CURRENT_USER\SOFTWARE\Microsoft\Office\Outlook\Addins\bwoutlook.AddinModule]
"DisplayName"="Bluewhale for Outlook"
"Description"="Bluewhale for Outlook allows you to send and receive large files using e-mail."
"CommandLineSafe"=dword:00000000
"LoadBehavior"=dword:00000003
```

### Registry settings

Property: BLUEWHALE\_SERVER  
Registry key: bluewhaleServer  
Example value: https://bluewhale.company.com  
User override: Yes  
Description: URL to your Bluewhale Server.

Property: ASK\_BEFORE\_BLUEWHALING  
Registry key: askBeforeBluewhaling  
Default value: False  
User override: Yes

Description: Prompt the user if an e-mail has to be sent by Bluewhale.

Property: SAVE\_PASSWORD

Registry key: savePassword

Default value: True

User override: Yes

Description: Bluewhale for Outlook can store Bluewhale login information in an encrypted form. Only used if Kerberos or AD FS single sign-on is not used.

Property: LOWER\_LIMIT

Registry key: lowerLimit

Default value: 20

User override: Yes

Description: The default Bluewhale attachment size trigger in Mb. Mails with attachments larger than this limit, will be intercepted by Bluewhale.

Property: HIDE\_BW\_INFO\_MESSAGE

Registry key: hideBwInfoMessage

Default value: False

User override: Yes

Description: This options toggles if the "Bluewhale is installed and ready to use"-message should be shown to the user, the first time Bluewhale is installed.

Property: ACCEPT\_ANY\_CERT

Registry key: acceptAnyCert

Default value: False

Description: If enabled Bluewhale will accept any SSL certificate, including self-signed certificates.  
**Not recommended for production systems.**

## Authentication

Property: SERVICE\_PRINCIPAL

Registry key: kerberosServicePrincipal

Example value: bwservice/bluewhale.your.domain@COMPANY.DOMAIN

User override: Yes

Description: Kerberos service principal. Required for Kerberos single-sign-on.

Property: USE\_SSPI

Registry key: useSSPI

Default value: False

User override: Yes

Description: Login using Kerberos single sign-on.

Property: USE\_ADFS

Registry key: useADSF

Default value: False

User override: Yes

Description: Login using AD FS.

Property: USE\_ADAL

Registry key: useADAL

Default value: False

User override: Yes  
Description: Login using ADAL/OAuth2.

### Sending methods

Property: ENABLE\_SEND\_SECURE  
Registry key: enableSendSecure  
Default value: True  
Description: Enables the extended "Send with Bluewhale"-dialog.

Property: USE\_PIN\_CODE\_BY\_DEFAULT  
Registry key: usePinCodeByDefault  
Default value: True  
Description: Controls if "Send SMS PIN code" should be selected by default in Bluewhale dialog. If set to True the ASK\_BEFORE\_BLUEWHALING property is ignored since the Bluewhale dialog must always be shown. Can also be controlled server side.

Property: ENABLE\_EBOKS  
Registry key: enableEboks  
Default value: False  
Description: Enables Digital Post/e-Boks features. Can also be controlled server side.

Property: ENABLE\_NEMID  
Registry key: enableNemId  
Default value: False  
Description: Enables NemId features. Can also be controlled server side.

Property: ENABLE\_Send\_Clear  
Registry key: enableSendClear  
Default value: True  
Description: Enables the ability to send large files and folder but with no extra recipient validation. Can also be controlled server side.

### Additional features

Property: ENABLE\_PROCESS\_FILES  
Registry key: enableProcessFiles  
Default value: False  
Description: Enables the Process Files button on the Bluewhale tab. This allows Bluewhale to be used in combination with other secure mail systems (e.g. Bluewhale handles the large files and the other system protects the message).

Property: ENABLE\_INVITATION  
Registry key: enableInvitation  
Default value: False  
Description: Enables the Insert Invitation button on the Bluewhale tab.

Property: ADD\_SIGNATURE\_TO\_PROTECTED\_MESSAGES  
Registry key: addSignatureToProtectedMessages  
Default value: True  
Description: If enabled the user's standard signature is appended to secure messages.

Property:       ACTIVATE\_ON\_ITEM\_SEND  
Registry key:   activateOnItemSend  
Default value:  True  
Description:    If this property is true, Bluewhale will intercept Outlook send events and scan for Bluewhale attachments and large files.

Property:       ENABLE\_LOGIN\_SETTINGS  
Registry key:   enableLoginSettings  
Default value:  True  
Description:    If this property is true, the user is allowed to adjust the Bluewhale settings.